

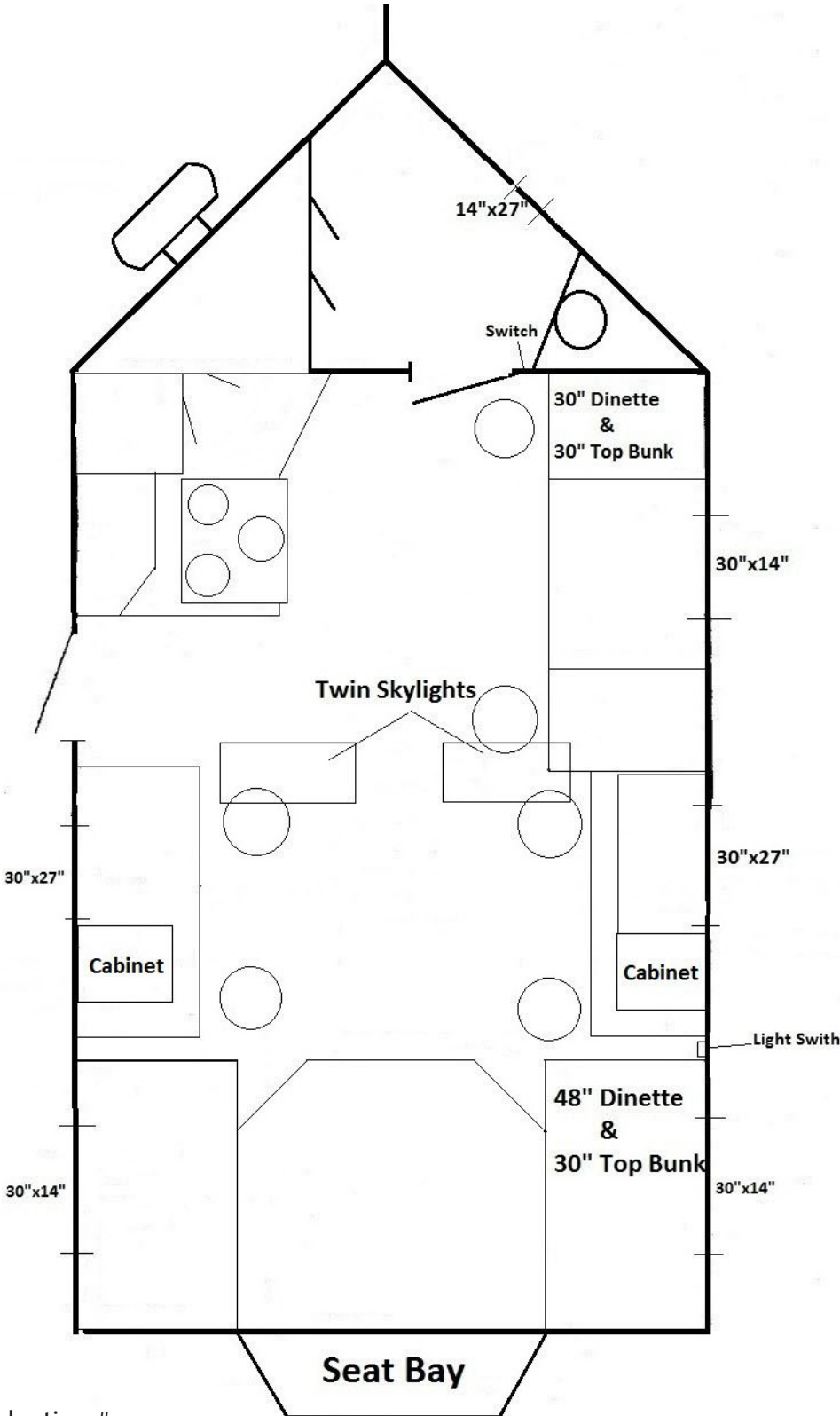
Dealer: \_\_\_\_\_

8 X 16 Mille Lacs ~ 2016

Color: \_\_\_\_\_

Customer: \_\_\_\_\_

Order Date: \_\_\_\_\_



- Single Axle Frame
- Hand Crank Winch System
- SS Cables
- 6 Holes with Lights
- Wire for Portable Satellite
- Digital TV Antenna
- Radio w/4 speakers
- 12V Kill Switch
- 12V Recepts
- 110V Recepts
- 2 ~ 110V Lights
- Cedar Interior
- 2 ~ 2' Cabinets on wheel wells
- Bath w/toilet seat
- Cabinet in bath
- 3 Burner cook-top w/oven
- Range hood w/vent
- Cathedral Ceiling
- Camo cushions & curtains
- 30,000 BTU Furnace
- 2 ~ 30" Bunks
- 30" Dinette
- 48" Dinette
- Bay Window
- Bay Seat Cushion
- 2 ~ 16" X 32" Skylights

---

---

---

---

---

---

---

---

---

---

---

---

---

---

Production #  
\_\_\_\_\_